



LAMPIRAN

A. HASIL UJI VALIDITAS (SPSS V.27)

Correlations

		P01	P02	P03	P04	P05	P06	P07	P08	P09	P10	P11	P12	P13	P14	P15	P16	P17	P18	P19	P20	TOTAL
P01	Pearson Correlation	1	.679*	.524*	.594*	.604*	.744*	.397*	.085	.490*	.473*	.688*	.519*	.394*	.571*	.664*	.614*	.501*	.614*	.198	.349	.815**
	Sig. (2-tailed)		.000	.003	.001	.000	.000	.030	.654	.006	.008	.000	.003	.031	.001	.000	.000	.005	.000	.295	.058	.000
	N	30	30	30	30	30	30	30	30	30	30	30	30	30	30	30	30	30	30	30	30	30
P02	Pearson Correlation	.679*	1	.318	.471*	.555*	.626*	.467*	.259	.560*	.516*	.762*	.709*	.388*	.452*	.644*	.701*	.102	.219	.204	.017	.748**
	Sig. (2-tailed)	.000		.087	.009	.001	.000	.009	.167	.001	.003	.000	.000	.034	.012	.000	.000	.593	.245	.281	.928	.000
	N	30	30	30	30	30	30	30	30	30	30	30	30	30	30	30	30	30	30	30	30	30

P03	Pearson Correlation	.524*	.318	1	.534*	.402*	.393*	.323	.148	.411*	.308	.553*	.274	.333	.378*	.444*	.416*	.522*	.587*	.386*	.484*	.650**
	Sig. (2-tailed)	.003	.087		.002	.028	.032	.082	.435	.024	.098	.002	.144	.073	.040	.014	.022	.003	.001	.035	.007	.000
	N	30	30	30	30	30	30	30	30	30	30	30	30	30	30	30	30	30	30	30	30	30
P04	Pearson Correlation	.594*	.471*	.534*	1	.115	.395*	.331	.227	.298	.282	.468*	.209	.240	.269	.289	.321	.314	.529*	.131	.392*	.555**
	Sig. (2-tailed)	.001	.009	.002		.545	.031	.074	.227	.109	.132	.009	.269	.201	.150	.121	.083	.091	.003	.490	.032	.001
	N	30	30	30	30	30	30	30	30	30	30	30	30	30	30	30	30	30	30	30	30	30
P05	Pearson Correlation	.604*	.555*	.402*	.115	1	.636*	.597*	.370*	.527*	.595*	.686*	.712*	.490*	.454*	.512*	.510*	.308	.180	.479*	.376*	.772**
	Sig. (2-tailed)	.000	.001	.028	.545		.000	.001	.044	.003	.001	.000	.000	.006	.012	.004	.004	.098	.340	.007	.041	.000

N		30	30	30	30	30	30	30	30	30	30	30	30	30	30	30	30	30	30	30	30	30
P06	Pearson	.744*	.626*	.393*	.395*	.636*	1	.467*	.196	.582*	.485*	.640*	.541*	.469*	.651*	.707*	.597*	.376*	.556*	.260	.172	.811**
	Correlation	*	*		*			*		*	*	*	*	*	*	*	*	*	*			
	Sig. (2-tailed)	.000	.000	.032	.031	.000		.009	.299	.001	.007	.000	.002	.009	.000	.000	.000	.041	.001	.165	.362	.000
N		30	30	30	30	30	30	30	30	30	30	30	30	30	30	30	30	30	30	30	30	30
P07	Pearson	.397*	.467*	.323	.331	.597*	.467*	1	.673*	.424*	.586*	.668*	.523*	.673*	.163	.397*	.359	.069	.048	.633*	.345	.691**
	Correlation	*	*			*	*		*	*	*	*	*	*					*	*		
	Sig. (2-tailed)	.030	.009	.082	.074	.001	.009		.000	.020	.001	.000	.003	.000	.388	.030	.051	.719	.803	.000	.062	.000
N		30	30	30	30	30	30	30	30	30	30	30	30	30	30	30	30	30	30	30	30	30
P08	Pearson	.085	.259	.148	.227	.370*	.196	.673*	1	.436*	.614*	.265	.287	.216	.006	.096	.045	.000	-.207	.544*	.162	.411*
	Correlation					*		*		*	*								*	*		*

	Sig. (2-tailed)	.654	.167	.435	.227	.044	.299	.000		.016	.000	.157	.124	.251	.974	.612	.813	1.000	.272	.002	.391	.024
	N	30	30	30	30	30	30	30	30	30	30	30	30	30	30	30	30	30	30	30	30	30
P09	Pearson Correlation	.490*	.560*	.411*	.298	.527*	.582*	.424*	.436*	1	.715*	.416*	.607*	.370*	.638*	.446*	.399*	.121	.253	.375*	.114	.728**
	Sig. (2-tailed)	.006*	.001	.024	.109	.003	.001	.020	.016		.000	.022	.000	.044	.000	.013	.029	.523	.177	.041	.547	.000
	N	30	30	30	30	30	30	30	30	30	30	30	30	30	30	30	30	30	30	30	30	30
P10	Pearson Correlation	.473*	.516*	.308	.282	.595*	.485*	.586*	.614*	.715*	1	.480*	.494*	.403*	.251	.349	.328	-.074	-.037	.425*	.015	.645**
	Sig. (2-tailed)	.008	.003	.098	.132	.001	.007	.001	.000	.000		.007	.006	.027	.181	.059	.076	.699	.845	.019	.938	.000
	N	30	30	30	30	30	30	30	30	30	30	30	30	30	30	30	30	30	30	30	30	30

P11	Pearson	.688*	.762*	.553*	.468*	.686*	.640*	.668*	.265	.416*	.480*	1	.719*	.697*	.358	.634*	.638*	.265	.260	.479*	.354	.831**
	Correlation	*	*	*	*	*	*	*		*	*		*	*		*	*			*		
	Sig. (2-tailed)	.000	.000	.002	.009	.000	.000	.000	.157	.022	.007		.000	.000	.052	.000	.000	.157	.165	.007	.055	.000
N		30	30	30	30	30	30	30	30	30	30	30	30	30	30	30	30	30	30	30	30	30
P12	Pearson	.519*	.709*	.274	.209	.712*	.541*	.523*	.287	.607*	.494*	.719*	1	.467*	.480*	.613*	.677*	.175	.151	.372*	.188	.751**
	Correlation	*	*			*	*	*		*	*	*		*	*	*	*					
	Sig. (2-tailed)	.003	.000	.144	.269	.000	.002	.003	.124	.000	.006	.000		.009	.007	.000	.000	.356	.427	.043	.319	.000
N		30	30	30	30	30	30	30	30	30	30	30	30	30	30	30	30	30	30	30	30	30
P13	Pearson	.394*	.388*	.333	.240	.490*	.469*	.673*	.216	.370*	.403*	.697*	.467*	1	.340	.423*	.321	.106	.167	.591*	.279	.629**
	Correlation	*	*			*	*	*		*	*	*	*							*		
	Sig. (2-tailed)	.031	.034	.073	.201	.006	.009	.000	.251	.044	.027	.000	.009		.066	.020	.084	.577	.377	.001	.135	.000

N		30	30	30	30	30	30	30	30	30	30	30	30	30	30	30	30	30	30	30	30	30
P14	Pearson Correlation	.571*	.452*	.378*	.269	.454*	.651*	.163	.006	.638*	.251	.358	.480*	.340	1	.711*	.484*	.501*	.634*	.068	.143	.673**
	Sig. (2-tailed)	.001	.012	.040	.150	.012	.000	.388	.974	.000	.181	.052	.007	.066		.000	.007	.005	.000	.721	.453	.000
N		30	30	30	30	30	30	30	30	30	30	30	30	30	30	30	30	30	30	30	30	30
P15	Pearson Correlation	.664*	.644*	.444*	.289	.512*	.707*	.397*	.096	.446*	.349	.634*	.613*	.423*	.711*	1	.755*	.464*	.563*	.209	.029	.766**
	Sig. (2-tailed)	.000	.000	.014	.121	.004	.000	.030	.612	.013	.059	.000	.000	.020	.000		.000	.010	.001	.268	.880	.000
N		30	30	30	30	30	30	30	30	30	30	30	30	30	30	30	30	30	30	30	30	30
P16	Pearson Correlation	.614*	.701*	.416*	.321	.510*	.597*	.359	.045	.399*	.328	.638*	.677*	.321	.484*	.755*	1	.332	.495*	.207	.002	.709**
	Sig. (2-tailed)	.000	.000	.014	.121	.004	.000	.030	.612	.013	.059	.000	.000	.020	.000		.000	.010	.001	.268	.880	.000

	Sig. (2-tailed)	.000	.000	.022	.083	.004	.000	.051	.813	.029	.076	.000	.000	.084	.007	.000		.073	.005	.272	.991	.000
	N	30	30	30	30	30	30	30	30	30	30	30	30	30	30	30	30	30	30	30	30	30
P17	Pearson Correlation	.501*	.102	.522*	.314	.308	.376*	.069	.000	.121	-.074	.265	.175	.106	.501*	.464*	.332	1	.750*	.106	.506*	.462*
	Sig. (2-tailed)	.005	.593	.003	.091	.098	.041	.719	1.000	.523	.699	.157	.356	.577	.005	.010	.073		.000	.579	.004	.010
	N	30	30	30	30	30	30	30	30	30	30	30	30	30	30	30	30	30	30	30	30	30
P18	Pearson Correlation	.614*	.219	.587*	.529*	.180	.556*	.048	-.207	.253	-.037	.260	.151	.167	.634*	.563*	.495*	.750*	1	-.022	.278	.527**
	Sig. (2-tailed)	.000	.245	.001	.003	.340	.001	.803	.272	.177	.845	.165	.427	.377	.000	.001	.005	.000		.909	.137	.003
	N	30	30	30	30	30	30	30	30	30	30	30	30	30	30	30	30	30	30	30	30	30

P19	Pearson Correlation	.198	.204	.386*	.131	.479*	.260	.633*	.544*	.375*	.425*	.479*	.372*	.591*	.068	.209	.207	.106	-.022	.509*	.525**
	Sig. (2-tailed)	.295	.281	.035	.490	.007	.165	.000	.002	.041	.019	.007	.043	.001	.721	.268	.272	.579	.909	.004	.003
	N	30	30	30	30	30	30	30	30	30	30	30	30	30	30	30	30	30	30	30	30
P20	Pearson Correlation	.349	.017	.484*	.392*	.376*	.172	.345	.162	.114	.015	.354	.188	.279	.143	.029	.002	.506*	.278	.509* ¹	.402*
	Sig. (2-tailed)	.058	.928	.007	.032	.041	.362	.062	.391	.547	.938	.055	.319	.135	.453	.880	.991	.004	.137	.004	.027
	N	30	30	30	30	30	30	30	30	30	30	30	30	30	30	30	30	30	30	30	30
TOTAL	Pearson Correlation	.815*	.748*	.650*	.555*	.772*	.811*	.691*	.411*	.728*	.645*	.831*	.751*	.629*	.673*	.766*	.709*	.462*	.527*	.525*	.402* ¹
	Sig. (2-tailed)	.000	.000	.000	.001	.000	.000	.000	.024	.000	.000	.000	.000	.000	.000	.000	.000	.010	.003	.003	.027

N	30	30	30	30	30	30	30	30	30	30	30	30	30	30	30	30	30	30	30	30	30	30
---	----	----	----	----	----	----	----	----	----	----	----	----	----	----	----	----	----	----	----	----	----	----

** . Correlation is significant at the 0.01 level (2-tailed).

* . Correlation is significant at the 0.05 level (2-tailed).

B. HASIL UJI REABILITAS (SPSS V.27)

REABILITY

Case Processing Summary

		N	%
Cases	Valid	30	100.0
	Excluded ^a	0	.0
	Total	30	100.0

a. Listwise deletion based on all variables in the procedure.

Reliability Statistics

Cronbach's Alpha	N of Items
.929	20

LEMBAR KUESIONER PENELITIAN

ANALISIS KETERLAMBATAN PROYEK KONSTRUKSI JALAN BERDASARKAN FAKTOR PENYEBAB DAN DAMPAKNYA TERHADAP WAKTU PELAKSANAAN

((Studi Kasus : Ruas Simpang Dolok Merangir – Laras))

Sehubungan dengan hal ini, saya memohon untuk kesediaan Bapak/Ibu mengisi kuesioner ini dengan jujur dan sesuai kondisi yang sebenarnya. Data yang diisi akan dijaga kerahasiaannya dan hanya digunakan untuk kepentingan penelitian. Jawaban bapak /Ibu sangat saya butuhkan dalam penulisan skripsi ini.

A. PETUNJUK PENGISIAN

Berikan tanda (✓) pada kolom jawaban yang tersedia menurut pengalaman dan perspektif anda, seberapa berpengaruh pernyataan-pernyataan di bawah ini terhadap keterlambatan proyek menurut anda

1. Sangat Tidak Setuju (STS)
2. Tidak Setuju (TS)
3. Netral (N)
4. Setuju (S)
5. Sangat Setuju (SS)

B. DATA RESPONDEN

1. Nama :
2. Usia :
3. Jenis Kelamin :
4. Bidang Pekerjaan :

C. DAFTAR PERNYATAAN KUESIONER

No	Faktor Keterlambatan	Variabel	Pernyataan	Skala yang Dipilih				
				1 STS	2 TS	3 N	4 S	5 SS
1	Faktor Pekerja	X1	Kurangnya keterampilan pekerja					
		X2	Kurangnya jumlah tenaga kerja					
		X3	Tingkat absensi pekerja tinggi					
2	Faktor Kontraktor	X4	Perencanaan dan penjadwalan yg tidak efektif					
		X5	Keterlambatan dalam mobilisasi alat-alat proyek ke lokasi proyek					
		X6	Pengawasan lapangan kurang efektif					
3	Faktor Owner	X7	Keterlambatan dalam pembayaran					
		X8	Perubahan desain oleh pengguna jasa selama masa konstruksi berlangsung					
4	Faktor Konsultan	X9	Komunikasi yang buruk antara konsultan dan pihak lain					
		X10	Konflik antara konsultan dan design engineer					
5	Faktor Desain	X11	Keterlambatan dalam pembuatan dokumen desain					
		X12	Desain tidak jelas, berubah -ubah					
6	Faktor Material	X13	Keterlambatan pengiriman material ke lokasi proyek					
		X14	Kualitas material tidak sesuai					

7	Faktor Peralatan	X15	Sering terjadinya kerusakan peralatan					
		X16	Operator kurang ahli dalam mengoperasikan alat					
		X17	Terlambat datangnya peralatan					
		X18	Jumlah peralatan yg tidak mencukupi					
8	Faktor Lainnya	X19	Cuaca ekstrim					
		X20	Adanya gangguan lingkungan disekitar pekerjaan					



DOKUMENTASI



Photo Pekerjaan Agregat Kelas B



Photo Pekerjaan Agregat Kelas A



Photo Pekerjaan Beton struktu Fc'15

DOKUMENTASI



Photo Pekerjaan Lapis Aus AC-WC



Photo Pekerjaan Lapis Aus AC-BC

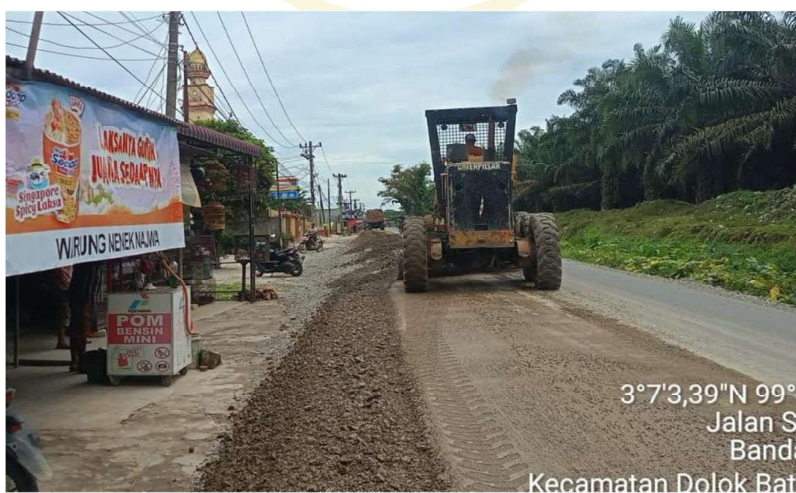


Photo Pekerjaan Agregat Kelas S

DOKUMENTASI



Photo Pengisian Kuesioner Responden



Photo Pengisian Kuesioner Responden



Photo Pengisian Kuesioner Responden



Photo Pengisian Kuesioner Responden